

MI PATIO

Letra de
LEÓN y CÓRDOBA

Música de
QUIROGA



Adagio

PIANO

f E F#m E7



mf C# D *p* E7 D E7



Allegretto modto.

Tes - ti - go de mis pe - nas y mi a - le -
A ti que - ro can - tar - te, rin - cón flo -

C# Bm7



grí - a, _____ de ro - sas y cla - ve - les siem - pre a - dor -
rí - o, _____ es - tam - pa se - vi - lla - na de los Quin -

C# Bm7



4fr.



na - o, _____ rin-con-ci-to e mi ar-ma don - de mi ví-a _____
 te-ro, _____ a ti, pa-tio del ar-ma, que a i - guá que un ní-o, _____

Musical score for the first system, including vocal line and piano accompaniment. The piano part features chords C# (first measure), Dm (second measure), and A (third measure). Dynamics include *f* and *mf*. The key signature is two sharps (F# and C#).



tran-qui-la y son - ri - en - te s'ha des - li - za - o. _____ Pa - tio de mis a -
 a tu som-bra guar - das - te mi a - mó pri - me - ro. _____ Pa - tio don - de las

Musical score for the second system, including vocal line and piano accompaniment. The piano part features chords Bm (second measure) and C# (third measure). A triplet of eighth notes is marked in the vocal line. Dynamics include *mf*. The key signature is two sharps (F# and C#).

mo-res, que es co-mo un tro - no _____ en er que yo he vi - ví-o des - de chi -
 flo-res de ca' ma - se - ta _____ son un jar - dín en chi-co je - cho de en -

Musical score for the third system, including vocal line and piano accompaniment. A triplet of eighth notes is marked in the vocal line. Dynamics include *mf*. The key signature is two sharps (F# and C#).

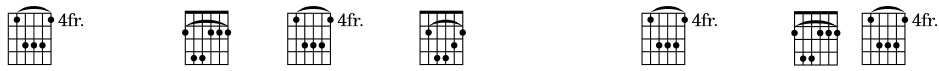


qui - lla, _____ en me - dio de tus flo - res me doy más to - no _____
 can - to, _____ pa' lu - sir-las pren - dí - as de la pei - ne - ta _____

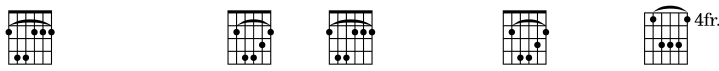
Musical score for the fourth system, including vocal line and piano accompaniment. The piano part features chords A (second measure), B7 (third measure), and E (fourth measure). A *rall.* marking is present in the second measure. A triplet of eighth notes is marked in the vocal line. Dynamics include *mf*. The key signature is two sharps (F# and C#).



que si fue - ra la rei - na de toa Se - vi - lla. Y có - mo me
 en la tar - de a - bri - le - ña del Jue - ves San - to. Y có - mo me



gus - ta des - de a - quí es - cu - chá la co - pla que el
 gus - ta des - de a - quí es - cu - chá la co - pla que el



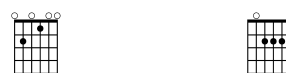
hom - bre que yo tan - to quie - ro me sue - le can - tá.
 hom - bre que yo tan - to quie - ro me sue - le can - tá.



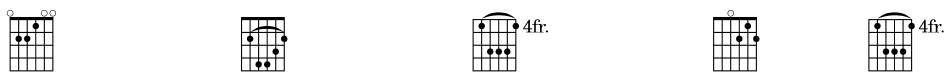
Allegretto



First system of piano accompaniment. The right hand features a melodic line with triplets and slurs. The left hand provides harmonic support with chords and bass lines. Chords indicated are E, D, E, D7, C#, F#m9, and C#.



Second system of piano accompaniment. The right hand continues the melodic line with triplets. The left hand features chords and bass lines. Chords indicated are E7 and A.



Third system of piano accompaniment. The right hand features a melodic line with triplets. The left hand provides harmonic support with chords and bass lines. Chords indicated are E, Bm, C#, D7, and C#. The instruction *poco rall.* is present.



Cuan - do

Fourth system of piano accompaniment. The right hand features a melodic line with triplets and slurs. The left hand provides harmonic support with chords and bass lines. Chords indicated are F#m9 and C#. The dynamic marking *mf* is present.

mi - ro tu ca - ra tras la can - se -



la me pa - re - se u - na ro - sa de pri - ma - ve - ra




y ————— qué bo - ni -




ta re - sul - ta en - tre ————— los — hie - rros



mi mo - re - ni - ta. _____

rall.

Musical notation for the first system, including treble and bass staves with notes and chords. The key signature has three sharps (F#, C#, G#). The bass line features a D major chord and a 7-measure rest.

De S a O
y salta



Musical notation for the second system, including treble and bass staves with notes and chords. The key signature has three sharps. The bass line features an A major chord and a 7-measure rest.



Musical notation for the third system, including treble and bass staves with notes and chords. The key signature has three sharps. The bass line features A dim, A, E, and D chords.



Musical notation for the fourth system, including treble and bass staves with notes and chords. The key signature has three sharps. The bass line features E, D7, C#, and a 4-measure rest. The system ends with a double bar line.

Sva-----